



# FU Series

Hydraulic oil transfer and filtration portable unit



## Technical information

### Frame

- Single phase electric motor 0,18 Kw, 4 poles, 230 V 50 Hz.
- Y type filter, 500  $\mu$ m, for pump protection.
- Gear pump 15 l/min.
- Safety relief valve set at 6 bar.

**Overall dimensions** (LxPxH): 480 x 520 x 620 mm.

**Weight:** 23,5 kg for FU0020  
25 kg for FU0030

### Filter Element

Before start a filter element must be fitted in the filter housing:  
for FU0020 refer to FA series catalogue, size A12x  
for FU0030 refer to F040 series catalogue, size DMD0030  
N.B. we recommend filtration with fiber media 03

### Common

**Working temperature:** 0°C +80°C

**Fluid compatibility** (acc.to ISO 2943):

Full with fluids HH-HG-HL-HM-HR-HV (acc.to ISO 6743/4)

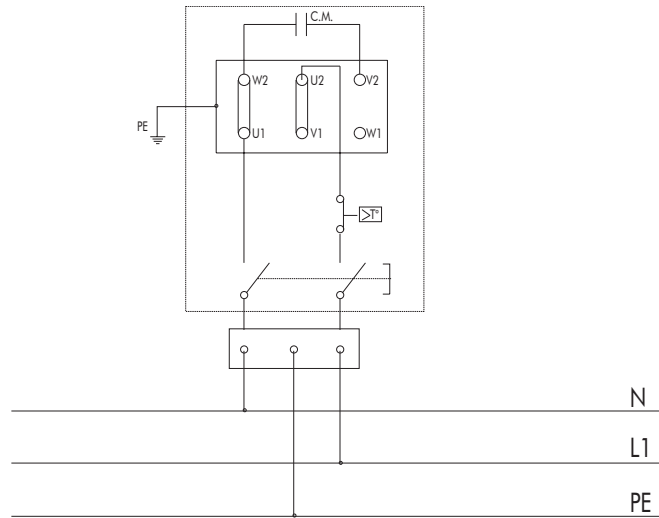
Viscosity: from 30 cSt to 150 cSt

For use with other fluids please contact the FILTREC Customer Service (info@filtrec.it)

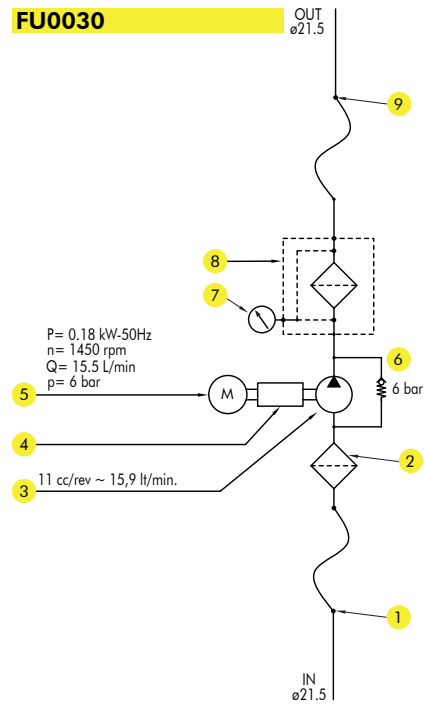
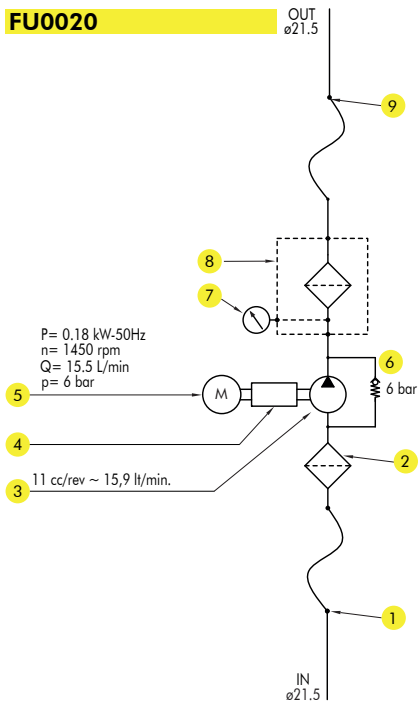
The unit is supplied complete with a Use and Maintenance Manual and it can be used only by authorized operators, that have read and understood completely the Manual.

**The FU units are CE certified**

# ELECTRIC DIAGRAM



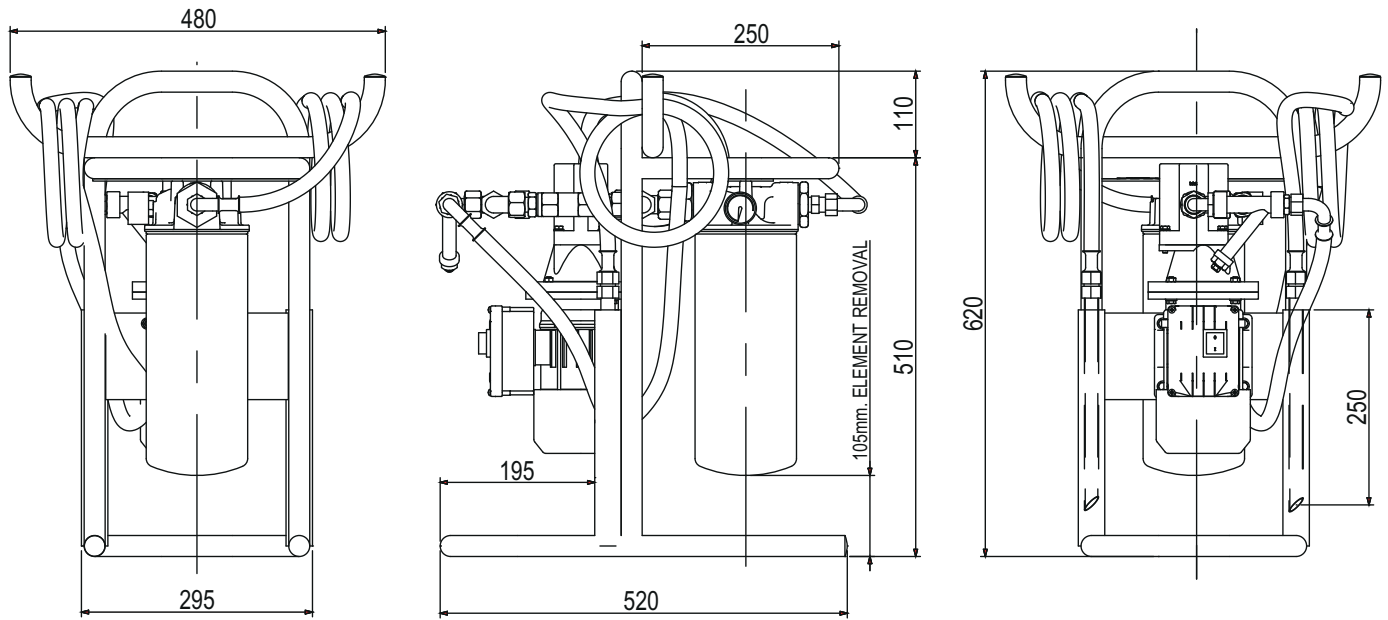
# HYDRAULIC DIAGRAM



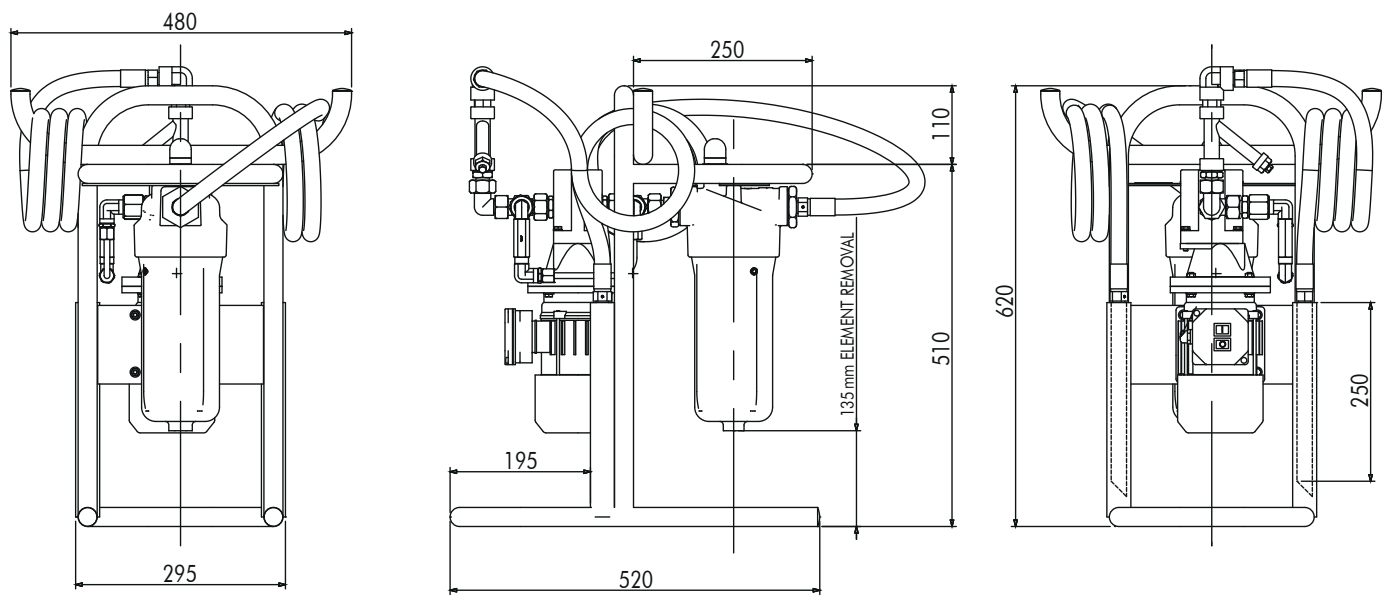
POS	DESCRIPTION
1	Flexible hose l = 3 m with rigid end
2	Suction filter "Y" type
3	Gear pump 15 l/min.
4	Motor-pump coupling arrangement
5	Single phase electric motor 0,18 kw with start/stop button
6	Safety relief valve
7	Clogging indicator
8	Filter housing
9	Flexible hose l = 3 m with rigid end

# Overall dimensions

## FU0020



## FU0030



## Ordering information

MODEL	
0020	fits filter cartridge A120xxx o A121xxx
0030	fits filter element DMD0030xxx

MODEL	ELECTRIC MOTOR	FLOW RATE	SEALS	VERSION
<b>0020</b>	<b>4</b> <b>M</b>	<b>015</b>	<b>B</b>	<b>01</b>

ELECTRIC MOTOR	
4	4 poles electric motor

ELECTRIC MOTOR	
M	single phase electric motor

FLOW RATE	
015	flow rate 15 l/min

SEALS	
B	NBR

VERSION	
01	standard version

### Filters maintenance

**For FU0020:** the inline filter is complete with a clogging indicator (pressure gauge), the filter cartridge must be replaced when the pointer reaches the red sector.

For further information please refer to the Use and Maintenance Handbook and to the technical datasheet of the FA1 series.

**For FU0030:** the inline filter is complete with a differential clogging indicator, the filter element must be replaced when the green sector switches to red.

For further information please refer to the Use and Maintenance Handbook and to the technical datasheet of the F040 series.

